



# Low Temperature Rental Chiller Module



## MODULE COMPONENTS

- One (1) 500-ton York-Frick low temperature chiller with a microcomputer control center for operating and safety controls down to -40° F leaving water temperature
- One (1) 25 hp Bell and Gossett condenser water pump that delivers 1405 gpm at 50 feet of head pressure
- One (1) 25 hp Bell and Gossett evaporator water pump that delivers 1200 gpm at 50 feet of head pressure
- Triple duty valve to dial in proper flow to evaporator
- Butterfly valve to dial in condenser water flow
- In-line water strainers to protect system from foreign objects
- Insulated water lines to prevent condensation
- Refrigeration lines fitted with vibration absorbers to prevent vibration damage
- Low flow bypass on condenser and evaporator lines to prevent chiller shutdown in low flow conditions
- Exhaust fan and outside air damper to discharge compressor motor heat
- Suction diffusers to remove debris and distribute proper water flow
- Refrigerant monitor to ensure safe operating conditions

## CAT® ISO CONTAINER AND TRAILER

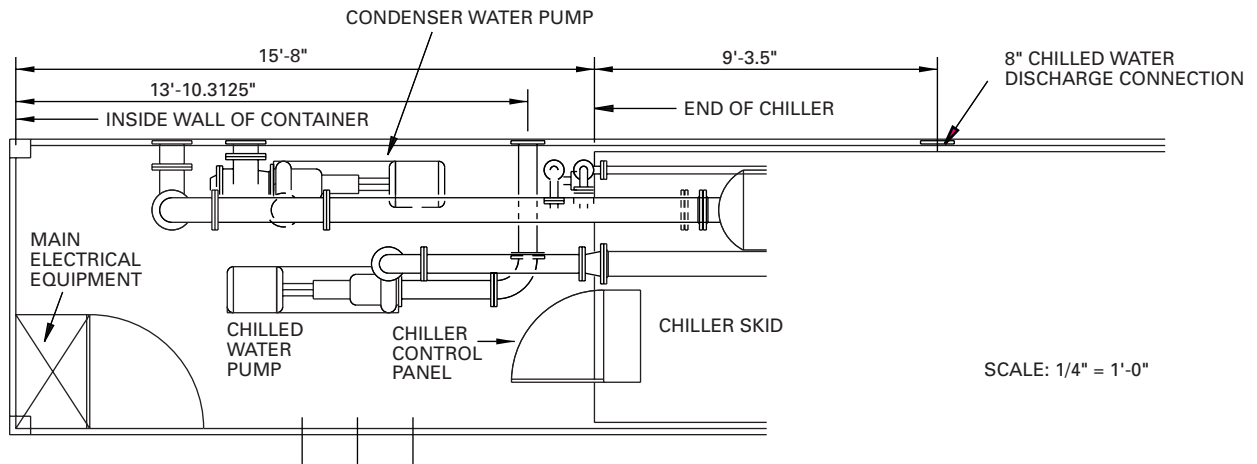
- One (1) 40-foot ISO container
- Two (2) 8-inch flanged condenser water connections
- Two (2) 6-inch flanged evaporator water connections

- Lockable bus bar access door to keep unauthorized personnel from accessing high voltage cables
- Lockable doors to prevent unauthorized entry
- Roll-up doors for service access to the containers
- Air ride chassis to help prevent road vibration

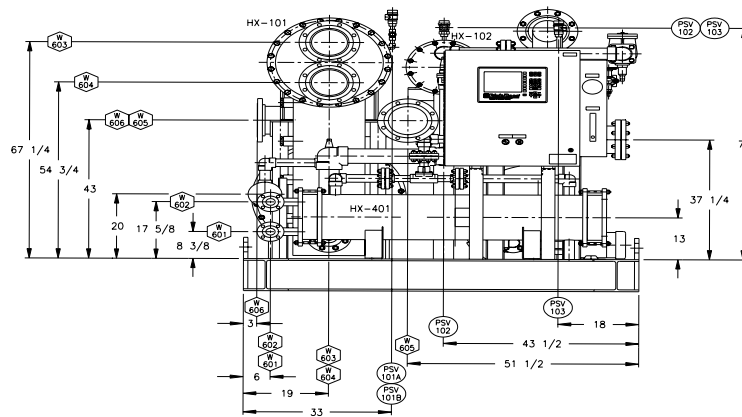
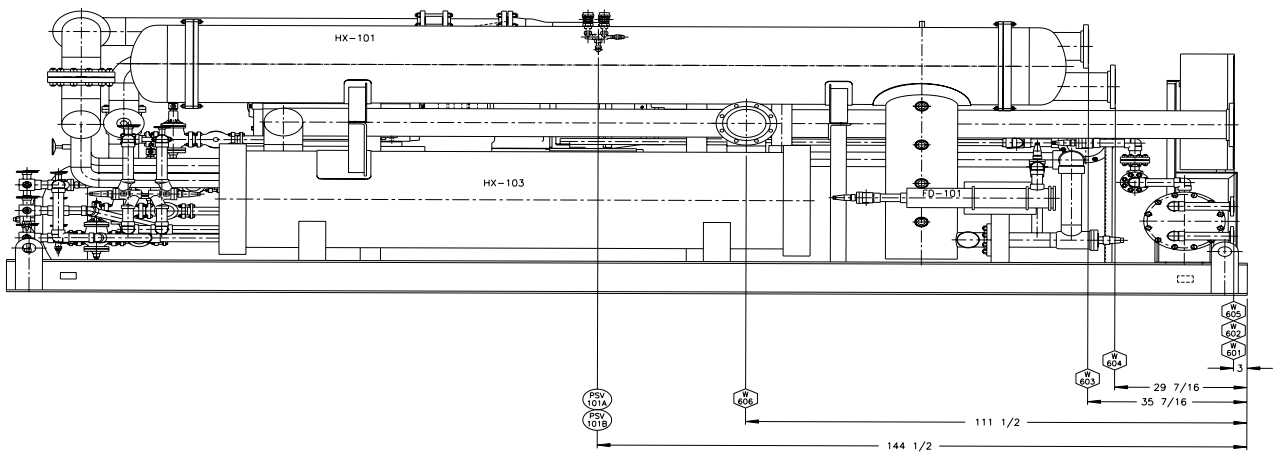
## ELECTRICAL AND CONTROL PANELS

- Total Full Load Amps = 612 @ 480 volt/3 phase/ 60 hertz
- Short circuit and ground fault protection to be provided by one (1) 1200 amp main adjustable circuit breaker for the total system
- Main adjustable circuit breaker ranges from 1200 to 800 amps
- Individual branch circuit breakers provided for chiller, evaporator, and condenser water pumps
- Incoming power connections will be accommodated by the factory-installed copper bus bar landing pads; three (3) 4/0 type SO or W cables per phase required to handle load
- Ground connection will accept two (2) 4/0 type SO or W cables
- Class I Div 2 Group D control panel
- Bulk head connection for nitrogen purged control panels
- Phase rotation light
- Convenient 120 volt inlets allow user to supply power to critical warm-up crankcase heaters prior to running to allow 480 volt to be disconnected
- 120 VAC lighting for lighting without 480 volt power supply

**DIMENSIONS**



**PLAN VIEW**



**SKID**