



**CERTIFIED
REBUILD
OPTIONS.**

MacAllister

CAT

REBUILD FOR THE FUTURE



At MacAllister Machinery, restoring the full potential of your Cat® machine is what we do best. Our Certified Rebuild Options provide a second life for your equipment — increasing uptime, enhancing performance, and protecting your investment — all with the quality you expect from Cat.

Extend the life of your equipment with comprehensive rebuild solutions designed to meet your needs — whether you need a full machine overhaul, a powertrain rebuild, or a specific component rebuild.



Certified Rebuild Options Overview

Rebuild Option	Coverage
CMR	Complete Machine Rebuild
CPT	Certified Powertrain Rebuild
CPT + H	Certified Powertrain + Hydraulics Rebuild
CHR	Certified Hydraulics Rebuild (Excavators, Track Loaders, Hydraulic Shovels)
CMCR	Component Rebuild Options (Engine, Transmission, Axles, Differentials, Final Drives, Hydraulic Pumps)

CERTIFIED MACHINE REBUILD CMR



What's Included with a CMR:

- Complete disassembly down to the frame.
- "Like-New" performance, with all critical updates included.
- A new CMR rebuild ID number can be assigned.
- Note: CMR can only be performed once per frame unless replaced.
- Extended Protection Plan options available.



Explore Rebuild Options for Your Machine:

Contact your local PSSR or ISR, or call MacAllister to get started.

Once connected, they can walk you through rebuild options, timelines, pricing, and help determine the best solution for your machine.

This helps extend the life of your equipment and maximize your investment — all with expert guidance from the MacAllister team.



CERTIFIED POWERTRAIN REBUILD CPT



What's Included in a CPT?

- Reconditioning of all powertrain components: Engine, transmission, torque converter, differentials, final drives, drive lines.
- Includes electronic controls, sensors, radiators, and coolers.
- All friction discs and radiator cores included.
- All critical updates included.
- Extended Protection Plan options available.



Explore Rebuild Options for Your Machine:

Contact your local PSSR or ISR, or call MacAllister to get started.

Once connected, they can walk you through rebuild options, timelines, pricing, and help determine the best solution for your machine.

This helps extend the life of your equipment and maximize your investment — all with expert guidance from the MacAllister team.

CERTIFIED POWERTRAIN + HYDRAULICS **REBUILD CPT+H**



What's Included in a CPT+H?

- Full hydraulic system disassembly and reconditioning.
- Hydraulic tanks, hoses, motors, cylinders, pumps, tubes, and valves replaced or resealed.
- All critical updates included.
- All components repainted.
- Extended Protection Plan options available.



Explore Rebuild Options for Your Machine:

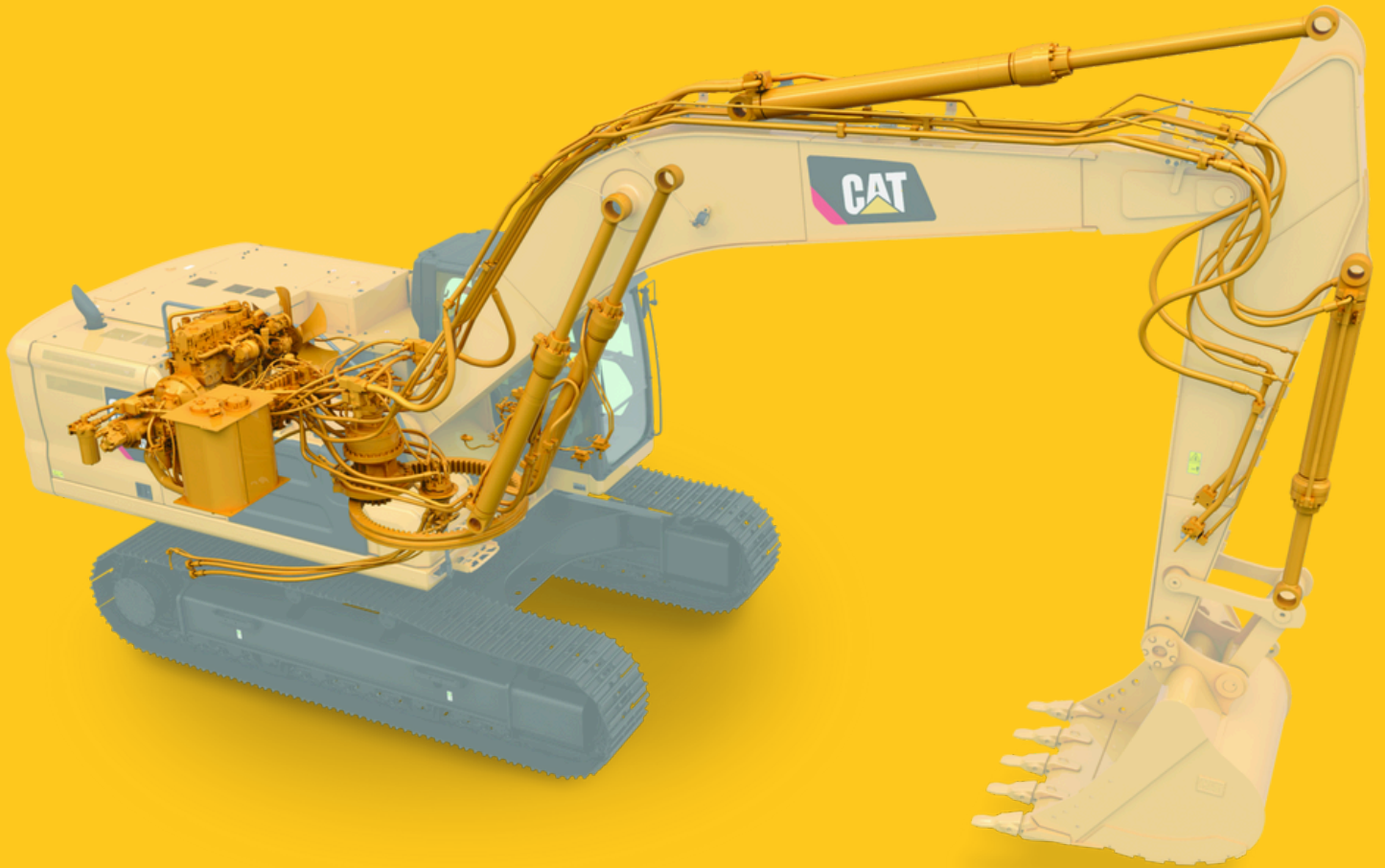
Contact your local PSSR or ISR, or call MacAllister to get started.

Once connected, they can walk you through rebuild options, timelines, pricing, and help determine the best solution for your machine.

This helps extend the life of your equipment and maximize your investment — all with expert guidance from the MacAllister team.



CERTIFIED HYDRAULICS REBUILD CHR



What's Included in a CHR?

- Available for excavators, track loaders, and hydraulic shovels.
 - Complete overhaul of hydraulic pumps, cylinders, valves, motors, swing drives, and tanks.
 - All critical updates included.
 - Engine, final drives and swing drives are excluded.
 - Extended Protection Plan options available.
-



Explore Rebuild Options for Your Machine:

Contact your local PSSR or ISR, or call MacAllister to get started.

Once connected, they can walk you through rebuild options, timelines, pricing, and help determine the best solution for your machine.

This helps extend the life of your equipment and maximize your investment — all with expert guidance from the MacAllister team.



CERTIFIED MACHINE COMPONENT **REBUILD CMCR-E**



What's Included in Your CMCR-E?

- Full engine rebuild to Certified Rebuild standards.
- Includes air system, cooling package, and emission components.
- All filters, mounts, and hoses replaced.
- Engine painted.
- Extended Protection Plan options available.



Explore Rebuild Options for Your Machine:

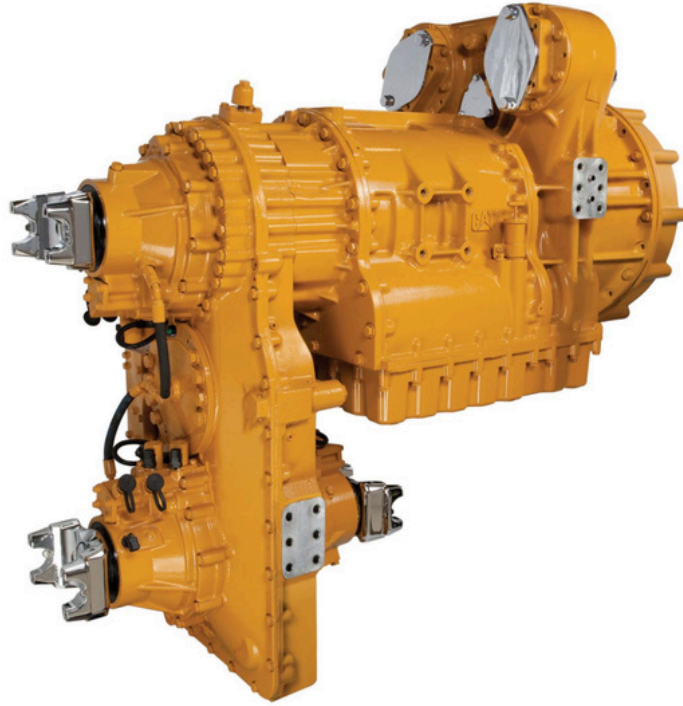
Contact your local PSSR or ISR, or call MacAllister to get started.

Once connected, they can walk you through rebuild options, timelines, pricing, and help determine the best solution for your machine.

This helps extend the life of your equipment and maximize your investment — all with expert guidance from the MacAllister team.



CERTIFIED MACHINE COMPONENT REBUILD CMCR - T



What's Included with a CMCR-T (Transmission/Torque) :

- Transmission and torque converter rebuilt to Certified Rebuild standards.
- Control testing and replacement.
- Friction discs replaced.
- Coolers replaced.
- All critical updates included.
- Transmission painted.
- Extended Protection Plan options available.



Explore Rebuild Options for Your Machine:

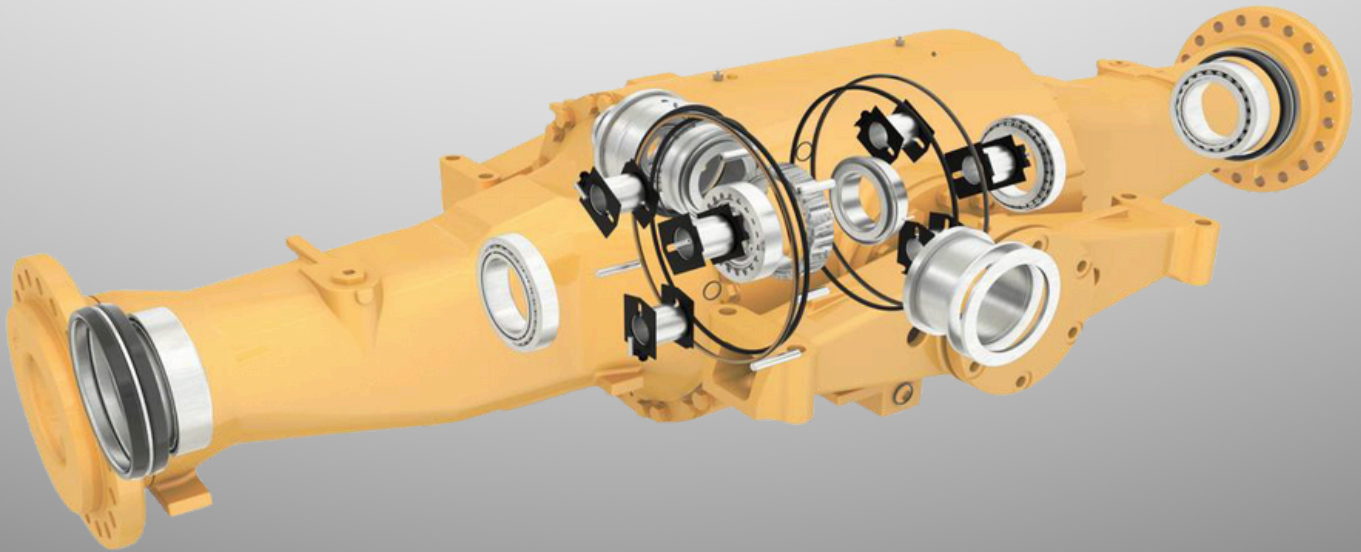
Contact your local PSSR or ISR, or call MacAllister to get started.

Once connected, they can walk you through rebuild options, timelines, pricing, and help determine the best solution for your machine.

This helps extend the life of your equipment and maximize your investment — all with expert guidance from the MacAllister team.



CERTIFIED MACHINE COMPONENT REBUILD CMCR-A



What's Included in the CMCR-A (Axle)?

- Full axle rebuild including final drives, differentials, and brakes.
- All critical updates included.
- Axle painted.
- Not available for motor graders, track-type tractors, or excavators.
- Extended Protection Plan options available.



Explore Rebuild Options for Your Machine:

Contact your local PSSR or ISR, or call MacAllister to get started.

Once connected, they can walk you through rebuild options, timelines, pricing, and help determine the best solution for your machine.

This helps extend the life of your equipment and maximize your investment — all with expert guidance from the MacAllister team.



CERTIFIED MACHINE COMPONENT REBUILD CMCR-D



What's Included in Your CMCR-D (Differential)?

- Differential rebuild to Certified Rebuild standards.
- SOS testing for oil-shared components.
- All critical updates included.
- Differential painted.
- Extended Protection Plan options available.



Explore Rebuild Options for Your Machine:

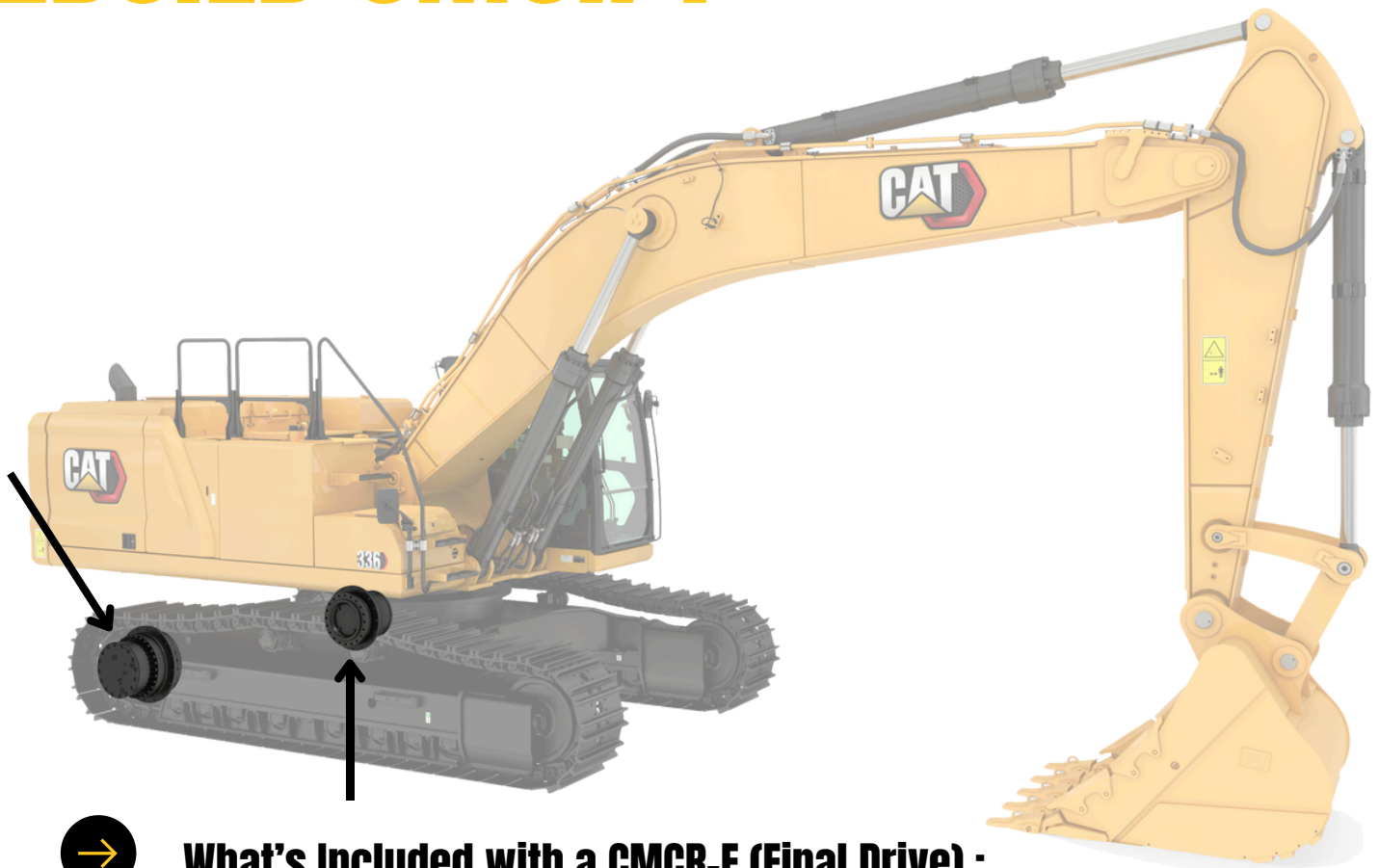
Contact your local PSSR or ISR, or call MacAllister to get started.

Once connected, they can walk you through rebuild options, timelines, pricing, and help determine the best solution for your machine.

This helps extend the life of your equipment and maximize your investment — all with expert guidance from the MacAllister team.



CERTIFIED MACHINE COMPONENT REBUILD CMCR-F



What's Included with a CMCR-F (Final Drive) :

- Final drive rebuild including brakes if applicable.
- SOS testing required if oil-shared components present.
- All critical updates included.
- Final drive painted.
- Extended Protection Plan options available.



Explore Rebuild Options for Your Machine:

Contact your local PSSR or ISR, or call MacAllister to get started.

Once connected, they can walk you through rebuild options, timelines, pricing, and help determine the best solution for your machine.

This helps extend the life of your equipment and maximize your investment — all with expert guidance from the MacAllister team.



CERTIFIED MACHINE COMPONENT REBUILD CMCR - HP



What's Included in the CMCR-HP (Hydraulic Pump)?

- Hydraulic pump replacement on select excavators.
- Pre-rebuild SOS and testing required.
- High- and low-pressure hoses, strainers, screens, couplings replaced.
- Pump painted.
- Extended Protection Plan options available.



Explore Rebuild Options for Your Machine:

Contact your local PSSR or ISR, or call MacAllister to get started.

Once connected, they can walk you through rebuild options, timelines, pricing, and help determine the best solution for your machine.

This helps extend the life of your equipment and maximize your investment — all with expert guidance from the MacAllister team.



Key Advantages of a Certified **Rebuild**:



Cost-Effective: Major savings versus purchasing new equipment.



High Quality: Only genuine Cat parts used; all critical updates performed.



Dealer Network Support: Backed by MacAllister Machinery's industry-leading service team.



Warranty Protection: Detailed warranties included contact your local PSSR.



Optional Add-Ons: Customer Value Agreements, Rebuild Financing, Equipment Protection Plans, and Front Structure Assurance Coverage available

READY TO REBUILD?

Get started with a Certified Rebuild today!



- Talk to your local PSSR or ISR to explore options.
- Indiana: (317) 545-2151
- Michigan: (248) 349-4800
- Visit: MacAllister.com or Michigancat.com

Whether it's a full machine overhaul or a component rebuild, our team is here to help you bring power back to your fleet — with trusted Cat® Certified Rebuild solutions by MacAllister.



 **MacAllister**

CAT