

# P195 PATH PAVER



## BUILT FOR PRODUCTION.

Engineered and built with versatility in mind, the Weiler P195 incorporates proven designs with new innovations to provide performance, reliability and outstanding mat quality in a wide range of applications.



## VERSATILE SCREED.

The Weiler designed screed delivers outstanding mat quality and a wide paving range. The 3' 10" (1.16 m) front mount screed is hydraulically extendable to 7' (2.13 m) and 9' (2.74 m) with bolt-on extensions.



## SMOOTH RIDE.

80" (2032 mm) track length with 64" (1625 mm) of ground contact and 125 mm track chain pitch provides smooth ride and excellent flotation. Automatic track tensioning ensures performance and maximizes component life.



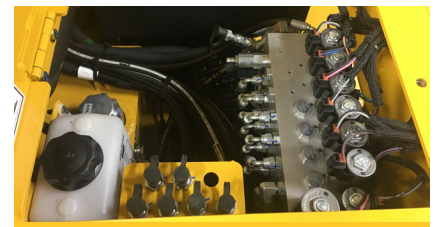
## VISIBILITY AND CONTROL.

All controls are located on a single panel within easy reach of the operator. The sliding control console enhances operator ease of use and visibility to either side of the machine.



## NARROW DESIGN.

The 46" (1.16 m) track width and 3' 10" (1.16 m) screed allows the P195 to fit within a 4' (1.2 m) cut for a true 4' (1.2 m) paving width. The hopper folds up for an overall machine width of 4' 7" (1397 mm) for simple transport and access to tight working environments.



## FAST SERVICE.

Remote grease lines, spray down system with 5 gal (19 L) tank and coiled hoses, three engine access doors and Caterpillar dealer service and support keep your machine up and running with limited down time.

# P195 SPECIFICATIONS

<b>WEIGHT</b>	13,000 lb	5896 kg	<b>SCREED WEIGHT</b>	1,800 lb	816 kg	<b>ENGINE</b>	Cat® C2.2 Tier 4F	
<b>LENGTH</b>	15'	4572 mm	<b>MAIN PLATE WIDTH</b>	16.5"	419 mm	<b>PAVING SPEED</b>	233 fpm	71 mpm
<b>WIDTH</b>	55"	1397 mm	<b>EXTENSION PLATE WIDTH</b>	9"	228 mm	<b>TRANSPORT SPEED</b>	350 fpm	106 mpm
<b>HEIGHT</b>	69"	1752 mm	<b>SCREED HEAT</b>	Electric - 4 elements		<b>FUEL CAPACITY</b>	25 gal	94 L
<b>TRUCK CLEARANCE</b>	20"	508 mm	<b>VIBRATION</b>	1 x 2500 vpm		<b>HYDRAULIC CAPACITY</b>	30 gal	113 L
<b>AUGER DIAMETER</b>	12"	305 mm	<b>MAX AUGER SPEED</b>	90 rpm		<b>SPRAY DOWN CAPACITY</b>	5 gal	18 L

## POWERTRAIN

Cat® C2.2 Tier 4F engine with 67 hp (50 kW)  
3-Speed hydrostatic drive, 350 fpm (106 mpm) transport speed  
Automatic track tensioning  
80" (2032 mm) track length with 64" (1625 mm) of ground contact  
8" (203 mm) performance, poly track pads  
6 track rollers per side  
125 mm track chain pitch  
Hydraulically driven 12 kW generator

## OPERATING ENVIRONMENT

Sliding, single control panel  
Push button keypads  
LCD display provides conditions and diagnostics  
Pause mode enables return to same settings  
Steering knob control  
Walkway extensions

## MATERIAL DELIVERY

7-ton (6.3 mt) hopper  
Replaceable floor plates  
Single conveyor  
Narrow chain guards  
12" (305 mm) Ni-hard augers  
Variable speed and reversible augers and conveyors  
Adjustable, oscillating and folding push roller  
Independent auger and conveyor control  
Independent hopper control

## SALES AND SERVICE

Sold and serviced exclusively through Caterpillar dealers worldwide.

[WWW.WEILERPRODUCTS.COM](http://WWW.WEILERPRODUCTS.COM)

## SCREED

3' 10" (1.6 m) to 7' (2.1 m) standard paving width  
9' (2.7 m) paving width with bolt-on extensions  
4 element electric heated screed w/ thermostatic control  
3/8" (9.5 mm) thick screed plates  
Heated end gates standard  
Grade and slope controls  
Sonic feed sensors  
Manual crown adjustment (+-3%)  
Folding rear walkway

## SERVICE/MAINTENANCE

5 gal (19 L) spray down system with 2 hoses/nozzles  
Braided electrical harnesses and sealed connections  
12-volt electric system with automotive-type fuses  
Remote hydraulic diagnostic ports  
Remote grease fittings  
3 engine access doors  
Lockable vandal covers and engine access doors

## OPTIONAL EQUIPMENT

LED strobe light  
Hand held remote  
Auto grade and slope controls  
LED work lights

## WARRANTY

12 months standard. Extended warranty available.